

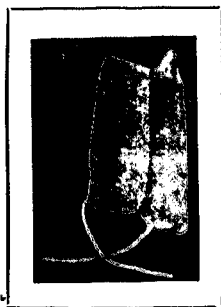
to the square inch. She also keeps complete outfits for aseptic operations on hire for from one to three guineas, according to the things supplied.

The first basket contains steriliser for bowls, bottles for lotions, and jugs with cover. The



THE "BEULAH" FRAME FOR SURGICAL MASK IN USE.

second, instrument steriliser, bowls, jugs, drugget for floor, antiseptics, &c. The third, air-tight drums with sterilised dressings, &c. Besides these the nurse takes a folding operation table, folding side tables of Miss Walker's design, and anything else the surgeon may need. The



THE "BEULAH" MASK FRAME.

surgical department is under the charge of a surgical nurse who can, when required, accompany the outfit and stay for the time of the operation.

The accompanying illustrations of the "Beulah" Frame for a Surgical Mask, designed by Miss

Walker, will be of interest to many of our readers. The frame is made with an inner layer of metal (non-corrosive) on which gauze is placed, and secured by a small clasp. It may be had in two designs, one to fit over the ears, the other with adjustable circle wire for the head. After numerous clinical tests it is found that the desirable thickness of gauze to be used is four layers. Two thicknesses are, therefore, taken, the frame opened, the gauze doubled upon it, slightly filled over the nose, and a tape quickly threaded through the free ends with a probe, so that when the mask is in position it can be tied snugly round the neck. The frames are supplied by Messrs. Allen & Hanburys, Wigmore Street, London, W., price 4s. 6d. and 7s. 6d. each, and should meet a real need. One advantage is that spectacles can be worn with them without inconvenience.

Miss Walker has recently adopted for the use of her nurses a handkerchief cap somewhat after the army pattern, with the pretty badge of the Co-operation embroidered in one corner in blue.

PRACTICAL POINTS.

Drug Eruptions.

A number of drugs in common use (says the *Medical Standard*) produce a characteristic eruption, and these

should always have careful scrutiny by the physician, lest they be mistaken as an original disease.

Here is a list of commonly used drugs which at times produce eruptions, itching, eczema and other manifestations:

Bromide of potassium: Papules, pustules, ulcers, echymoses and pemphigus.

Chloral: Erythema, itching, desquamation, eczema and petechia.

Copaiba and cubebs: Pemphigus, erythema and eczema.

Aconite: Vesicular exanthemata.

Arsenic: Erythema, papules, vesicles and sometimes pustules.

Iodide of potassium: About the same as arsenic, but more marked.

Mercury: Erythema and eczema.

Morphine: Erythema, papular eruption and sometimes desquamation.

Phosphorus: Purpura.

Quinine: Erythema, eczema, hemorrhagic purpura, pemphigus, and sometimes a typical urticaria with dyspnea.

Rhus toxicodendron: Vesicles, pruritus, redness and swelling of the skin.

Salicylic acid: Purpura, pemphigus and vesicular angina.

Santonin: Vesicles and pemphigus.

Belladonna, strychnine and stramonium may produce about the same dermal manifestations as quinine; while turpentine produces an eruption like that of copaiba.

[previous page](#)

[next page](#)